



# PDZK3 Polyclonal Antibody

<b>Catalog No</b>	YP-Ab-12791
<b>Isotype</b>	IgG
<b>Reactivity</b>	Human;Mouse;Rat
<b>Applications</b>	IHC;IF;ELISA
<b>Gene Name</b>	PDZD2
<b>Protein Name</b>	PDZ domain-containing protein 2
<b>Immunogen</b>	The antiserum was produced against synthesized peptide derived from human PDZD2. AA range:51-100
<b>Specificity</b>	PDZK3 Polyclonal Antibody detects endogenous levels of PDZK3 protein.
<b>Formulation</b>	Liquid in PBS containing 50% glycerol, 0.5% BSA and 0.02% sodium azide.
<b>Source</b>	Polyclonal, Rabbit,IgG
<b>Purification</b>	The antibody was affinity-purified from rabbit antiserum by affinity-chromatography using epitope-specific immunogen.
<b>Dilution</b>	Immunohistochemistry: 1/100 - 1/300. Immunofluorescence: 1/200 - 1/1000. ELISA: 1/10000. Not yet tested in other applications.
<b>Concentration</b>	1 mg/ml
<b>Purity</b>	≥90%
<b>Storage Stability</b>	-20°C/1 year
<b>Synonyms</b>	PDZD2; AIPC; KIAA0300; PDZK3; PDZ domain-containing protein 2; Activated in prostate cancer protein; PDZ domain-containing protein 3
<b>Observed Band</b>	
<b>Cell Pathway</b>	Nucleus . Cytoplasm . Endoplasmic reticulum . At cell-cell contacts in lung epithelial cells. .; [Processed PDZ domain-containing protein 2]: Secreted .
<b>Tissue Specificity</b>	Isoform 2 is expressed (at protein level) in prostate and many prostate tumors.
<b>Function</b>	disease:May be associated with the early promotion of prostate tumorigenesis.,PTM:A secreted form is produced by caspase-mediated proteolytic cleavage.,similarity:Contains 1 PDZ (DHR) domain.,similarity:Contains 6 PDZ (DHR) domains.,subcellular location:At cell-cell contacts in lung epithelial cells.,subunit:Interacts with SCN10A, CTNND2 and PKP4.,tissue specificity:Expressed (at protein level) in prostate and many prostate tumors.,
<b>Background</b>	The protein encoded by this gene contains six PDZ domains and shares sequence similarity with pro-interleukin-16 (pro-IL-16). Like pro-IL-16, the encoded protein localizes to the endoplasmic reticulum and is thought to be cleaved by a caspase to produce a secreted peptide containing two PDZ domains. In addition, this gene is upregulated in primary prostate tumors and may be involved in the early stages of prostate tumorigenesis. [provided by RefSeq, Dec 2015],

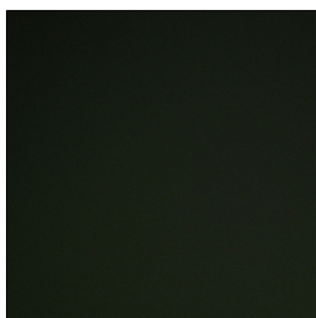
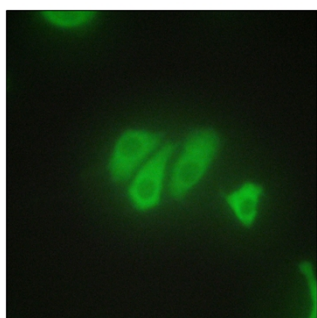
**matters needing attention**

Avoid repeated freezing and thawing!

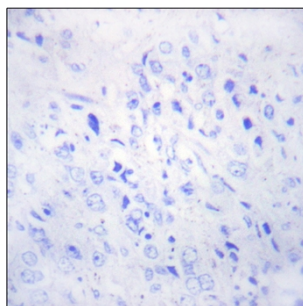
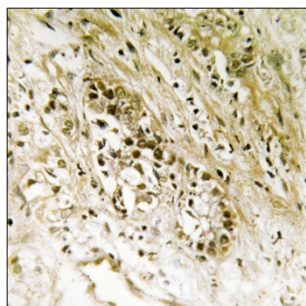
**Usage suggestions**

This product can be used in immunological reaction related experiments. For more information, please consult technical personnel.

## Products Images



Immunofluorescence analysis of HepG2 cells, using PDZD2 Antibody. The picture on the right is blocked with the synthesized peptide.



Immunohistochemistry analysis of paraffin-embedded human heart tissue, using PDZD2 Antibody. The picture on the right is blocked with the synthesized peptide.